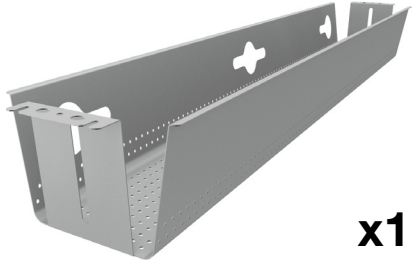


Allround Cable Tray

□ 429-C086W
■ 429-C086



CONTENT:



x1

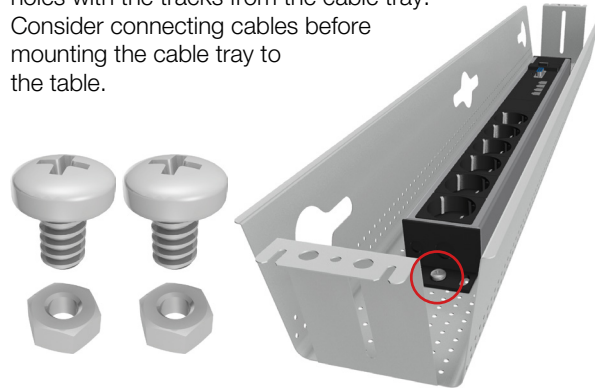


x1

1

POSITION AND FASTEN OUTLET

Using two M6 screws and two nuts (not provided), fasten one of our recommended electrical outlets to the cable tray. Use one screw and nut per side. Align the outlet holes with the tracks from the cable tray. Consider connecting cables before mounting the cable tray to the table.



Recommended Axessline outlets:

935-T4DC

4 Power, 4 Data, 2 USB,
1 VGA/audio, 1 HDMI



935-T6DS

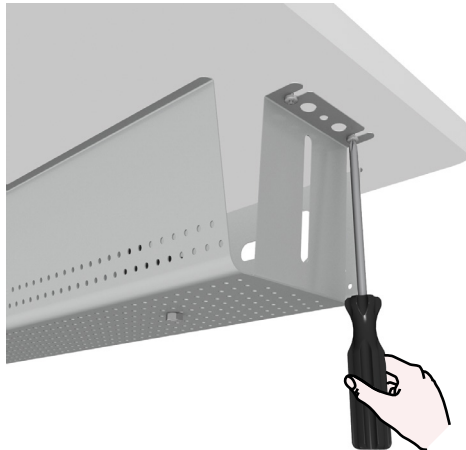
6 Power, 4 Data/switch



2

POSITION AND ATTACH

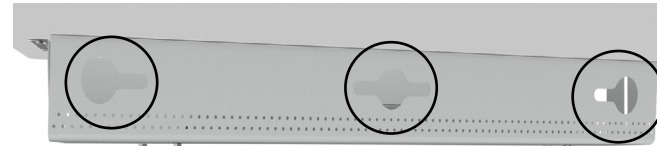
Position the cable tray and attach to the table using the provided wood screws.



3

READY TO USE

Once all screws are in position, the cable tray will be able to withstand pressure needed for all the necessary cables.



Tip! Be sure to make use of the cut out cable exits. There are three in total which can be found on one side of the tray.

4

CONNECTING

Connect all necessary cables intended to their corresponding ports and counterparts.

