

# Guideline

## What products do I need?



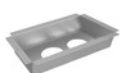
### Covers

### Trays

### Terminal strips

### Connection cables

 <p>935-TB20 Silver 935-TB20W White 935-TB20B Black</p>	 <p>935-TK20</p>	 <p>936-E3V30 White 936-E3V30B Black</p>	
 <p>935-TB30 Silver 935-TB30W White 935-TB30B Black</p>	 <p>935-TK28 Silver 935-TK31</p>	 <p>935-T2DU 2 Power, 2 data, 2 USB</p> <p>935-T2DC 2 Power, 2 data, 2 USB, 1 VGA, 1 HDMI</p> <p><u>Alternative:</u> 937-BS600 3 Power 937-BS604 4 Power</p>	 <p>935-BA20 Wieland-Schuko, 2.0 m 935-BA30 Wieland-Schuko, 3.0 m 935-BA60 Wieland-Schuko, 5.0 m</p>
 <p>935-TC30 Silver 935-TC30W White 935-TC30B Black</p>	 <p>935-TK31 Silver <sup>1)</sup> Alternative: Powerdot Tray</p>	 <p>937-BS600 3 Power 937-BS604 4 Power</p>	 <p>935-BF20 Wieland-Wieland, 2.0 m 935-BF30 Wieland-Wieland, 3.0 m</p>
 <p>935-TC60 Silver 935-TC60W White 935-TC60B Black</p>	 <p>935-TK61 Silver 935-TK61W White 935-TK61B Black <sup>2)</sup> Alternative: Powerdot Tray</p>	 <p>935-T4DC 4 power, 4 data, 1 VGA/audio, 1 HDMI</p> <p>935-T6DS 6 power, 4 data switch</p> <p><u>Alternative:</u> 937-BS600 3 Power 937-BS604 4 Power</p>	 <p>935-BTK12 Wieland T-junction 1 male, 2 female</p> <p>935-BTK13 Wieland T-junction 1 male, 3 female</p>
 <p>935-TC80 Silver 935-TC80W White 935-TC80B Black</p>	 <p>429-FX01 Silver 429-FX01W White</p>	<p><u>Alternative:</u> 937-BS600 3 Power 937-BS604 4 Power</p>	



<sup>1)</sup> Alternative to the TK31/TC30 is a Powerdot configuration.  
Tray for 2 Powerdots (935-TP02/W/B)  
See [www.kondator.se](http://www.kondator.se) for more info.



<sup>2)</sup> Alternative to the TK61/TC60 is a Powerdot configuration.  
Tray for 5 Powerdots (935-TP05/W/B)  
See [www.kondator.se](http://www.kondator.se) for more info.